

Warranty* of 15 Years

Against Perforation
by Corrosion

Learn More About
New **SMARTRUSS®**



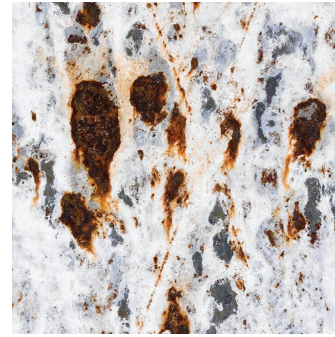
LYSAGHT
oneandonly

TRUECORE™ Steel Corrosion Performance

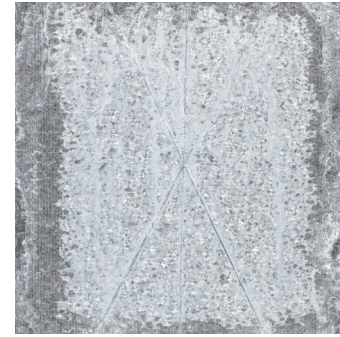
	Galvanised Steel 300g/m2	TRUECORE™ Steel 150g/m2
Cleveland Condensing Humidity Test	4032 hours to red rust	14000 hours to rust free
Salt Spray Chamber	295hours to 5% red rust	2260 hours to 5% red rust

* Warranty terms and conditions apply.

After 500 hours (Salt Spray Test)

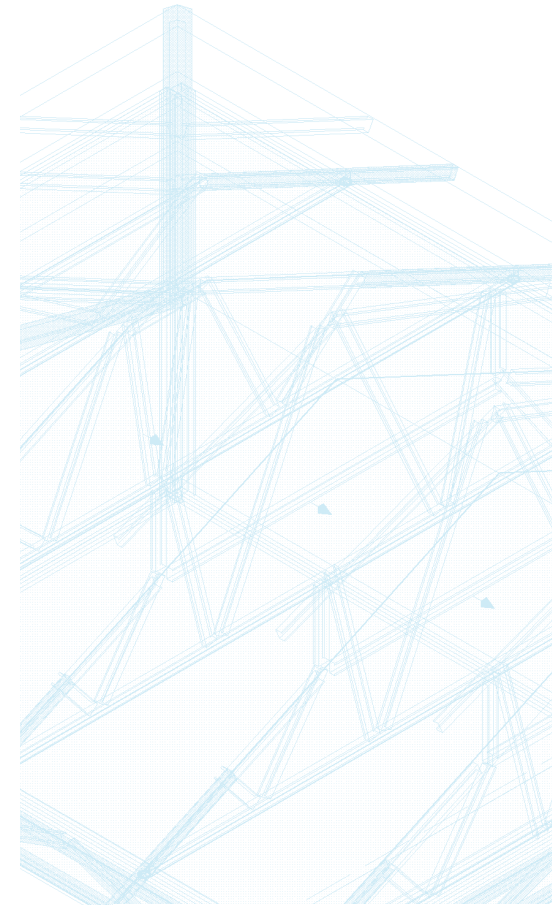


Galvanised Steel Z180



TRUECORE™ Steel

We're Your Best Partner for Your Roofing/Walling Solution



For more information, price quotes or personalised consultations, please call the branch nearest to you. Our people will be ready to respond to your needs immediately.

PT. NS BlueScope Lysaght Indonesia

Jakarta
Jl. Irian Blok DD2/2
Kawasan Industri MM - 2100
Cibitung - Bekasi
T (021) 8998 2965
F (021) 8998 2966

Surabaya
Jl. Raya Trosobo KM 24
Taman - Sidoarjo
T (031) 897 1279
F (031) 897 1279

Medan
Jl. Rumah Potong Hewan No. 117
Medan
T (061) 685 1555
F (061) 685 0155

VISIT OUR
WEBSITE



CONTACT US AT

✉ sales@paramasteel.id
☎ 021 5853 738
☎ +62 821 1273 1111

FOLLOW US AT

📷 parama_id
📱 paramasteel.id



VISIT US

Perkantoran Taman Kebon Jeruk
Intercon, Blok AA4 No. 16-18, Meruya
Selatan, Jakarta Barat - 11650

TrueCore™

LYSAGHT
oneandonly

BLUESCOPE
LYSAGHT

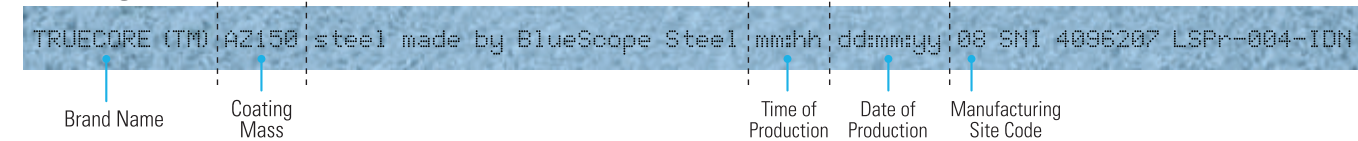
Steely Support for
Your Biggest
Visions



How to Identify Genuine New SMARTRUSS® TRUECORE™ Steel

Pay attention to the TrueCore® steel branding text on every coil, which is your assurance of BlueScope Steel's commitment to quality.

Branding text:



Copyright © 2004 by BlueScope Steel Limited. All rights reserved. No part of this brochure may be reproduced, stored in a retrieval system, or transmitted in any form or by any means, electronic, mechanical, photocopying, recording or otherwise, without written permission of BlueScope Steel Limited. LYSAGHT®, SMARTRUSS®, SUPRACADD® and TRUECORE™ are trademarks of BlueScope Steel Limited. BlueScope is a trademark of BlueScope Steel Limited.

* Warranty terms and conditions apply.

New
SMARTRUSS

SMARTRUSS®

Fast, Efficient, Well-engineered Steel Truss Solution.

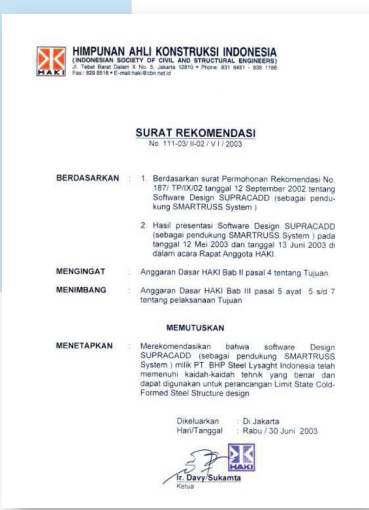
New SMARTRUSS® is a roof truss system that offers durability, affordability, strength, stability and compatibility with traditional building methods.

SUPRACADD®

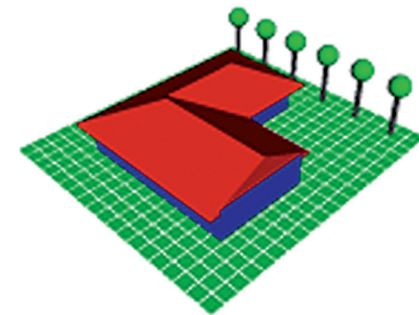
SUPRACADD® has been certified as a software which comply with technical provision for limit state cold-formed steel structure design.

Computer Designed

LYSAGHT SMARTRUSS® truss designs are supported by **SUPRACADD®** detailing software which models the geometry, designs the roof trusses and facilitates structural computations by licensed fabricators. This high-quality, industry leading software enables precise, customised truss designs with all the necessary details for accurate construction. Critically approved by industry professionals, it comes with a full set of cutting edge features, and forms the essential foundation for any successful, world-class building project.



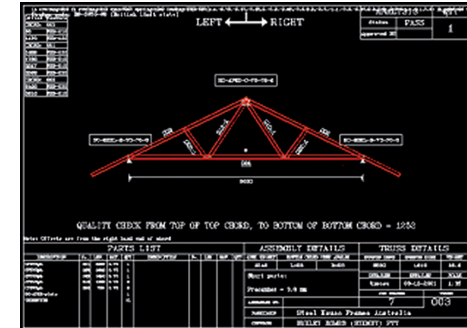
Step 1 - Input Building Layout



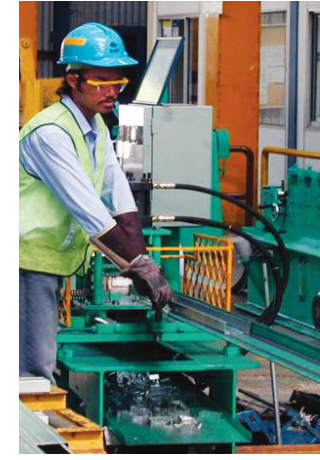
Step 2 - Trusses are designed



Step 3 - Engineering Calculation performed



Precision Manufacturing



Truss components are manufactured



Bundled together and marketed



Can be fabricated off-site and delivered pre-assembled



Assembled on-site

VISIT OUR WEBSITE



Accredited by the **National Association of Testing Authorities (NATA)**
 LYSAGHT® Technology operates a NATA-registered structural testing laboratory together with a complete research and development facility.

TrueCore™

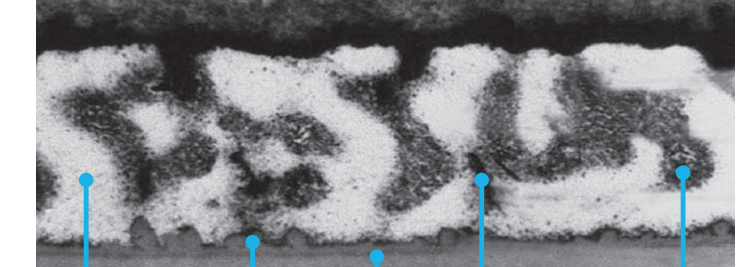
TRUECORE™ G550 steel is a hot-dipped aluminium zinc-coated structural steel with a guaranteed minimum yield strength of 550 Mpa, manufactured using a blue tinted resin. It is specifically designed for the residential house framing market

Why TRUECORE™ Steel?

Advantages

- High tensile strength: 550 MPa yield strength
- Structural load optimisation - Requires less building material - Reduces overall structural and lifting costs
- Corrosion-resistant coating technology
- Conforms to AS/NZS 1365: 1996 1 (Tolerances for flat-rolled steel products)
- Conforms to AS 1397: 2001 (Steel sheet and strip - Hot dipped Zinc-coated or Aluminium/Zinc-coated)
- Certified with SNI 4096: 2007 (BJ LAS G550 AS150)

Corrosion-resistant coating technology



- Coatings are applied to steel to prevent rust
- **TRUECORE™** steel coated with a 55% aluminium, 43.5% zinc, 1.5% silicon alloy coating
- Outperforms normal zinc galvanised steel by up to 4 times
- AZ150 coating class ("approximately" 50 µm coating thickness) Total both sides according to AS 1397

Advantages of TRUECORE™ steel vs. Timber Trusses

- Material consistency
- Fire resistant
- Unaffected by termites
- Longevity
- Less installation errors
- Unaffected by warping

Advantages of TRUECORE™ steel vs. Mild Steel Trusses

- Light and easy handling
- Welding not required and screw fastened
- Speed of construction
- Does not require painting
- Corrosion resistant
- No material wastage

Advantages of TRUECORE™ steel vs. Galvanised Iron

- 4X stronger protection against corrosion
- Superior cut edge protection
- Better tight bend performance

New SMARTRUSS

Advantages of New SMARTRUSS®

Strong

- Made using **TRUECORE™** G550 steel which is 30% stronger than mild steel
- Strength to weight ratio superior to all other common building materials
- New shape more efficient allowing lighter gauge to be used

High buildability Score

- Pre-fabricated roof trusses
- Reduced site labour
- Increased quality control

Lightweight

- Easily handled
- Low carnage costs
- Lower foundation costs

Durable

- Resistant to, and limits the spread of fire
- Termite, moisture and fungus resistant
- Electrically safe when properly earthed

Design flexibility

- High strength to weight ratio
- Provide larger spans and required fewer supports
- Design tools facilitate structural design



More Advantages from New SMARTRUSS®

Warranty

BlueScope Lysaght® provide Anti-Rust and Structural Warranty



Site Supervision

We will supervise all installation work based on shop drawing and standard installation



Installation Training

Installation training for licensed fabricator is given periodically

